

Making a Difference

the Greater Manchester
Pathology
(Laboratory Medicine) Network

Welcome to this conference organised by the Greater Manchester Pathology Network. We are a city region proud of our history of scientific excellence. Scientific discoveries here led to the industrial revolution which transformed the world; the world's first viable computer was created here which led to a second world-wide revolution; the atom was first split here and the first pictures of planet earth captured by our astronomers. Manchester continues to pioneer science in a variety of different fields and no where more strongly than in medicine, which is why we are particularly pleased to be hosting this conference as part of the first National Pathology Week.

We treat more and more patients for a variety of often highly complex conditions. The patient has a right to know that those treatments will work and are appropriate; so does the NHS. Evidence - based medicine relies heavily on accurate diagnosis and 70% of diagnoses in the NHS rely on pathology. You are vital to the quality, efficacy and cost effectiveness of all treatment.

This conference is an opportunity for pathology to help everyone to understand more clearly the value of what you do. You not only play a major role in saving lives and restoring quality of life, you are critical in the battle to ensure that the NHS's finite financial resources get the best possible returns. I wish you all a very successful conference and look forward to welcoming you back to Greater Manchester on a regular basis.



Felicity Goodey CBE DL
Chairman,
University Hospital of South Manchester
NHS Foundation Trust.

Greater Manchester Pathology (Laboratory Medicine) Network

The Network is one of the first and largest in the UK to take a 'holistic' view of pathology services by providing high-level clinical and managerial advice on key service planning issues and strategic decisions. The concept of Networks was actively promoted in the National Review of Pathology Services, Pathology – The Essential Service (2004) and is anticipated to be reaffirmed in the latest Independent Review for the DH by Lord Carter of Coles.

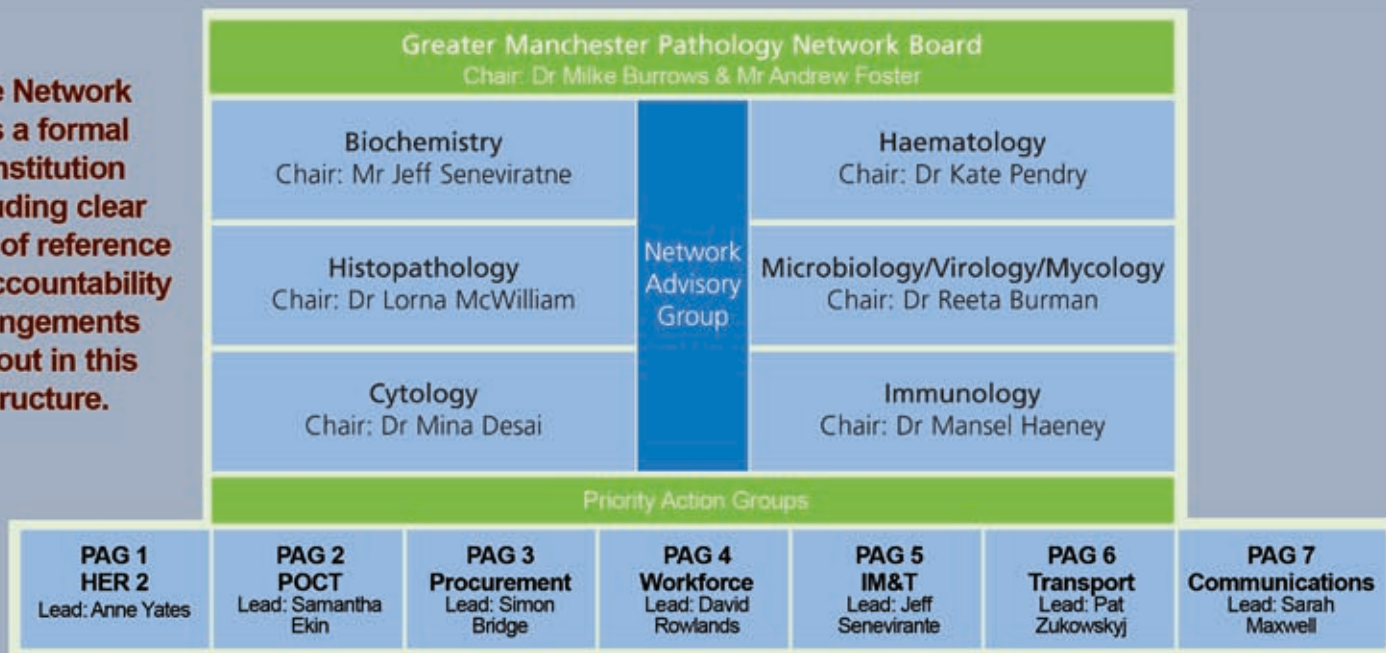
Greater Manchester has a population of 2.5 million, with 10 PCT areas and 16 hospitals providing pathology services. The Greater Manchester Pathology Network was established in late 2005 and formally launched in Spring 2006. Over the past two and a half years this has proven to be a model for building engagement, trust and respect and a powerful way of facilitating change. It has enabled barriers to be broken down between primary, secondary and tertiary care, focusing solutions on patient care pathways rather than organisations.

The aims are to:

- Provide profile and identity, coherent and collective strength
- Ensure national policies and strategies and can be effectively delivered locally
- Provide expertise and knowledge for commissioning pathways and service development
- Ensure standards, clinical governance, quality, sharing best practice and consistency
- Ensure effective communications at all levels and across all sectors, disciplines and geography
- Ensure all workforce, training and education issues are integral and built in
- Develop performance management arrangements to measure delivery
- Ensure effective and constructive patient and public involvement and engagement
- Develop appropriate infrastructure to ensure delivery, IM&T, Transport etc.

The Network aims to deliver high quality patient centred pathology services – access to appropriate services at the right time and in the right setting. Through better equity of access, faster results reporting, improved accuracy rates there will be less inappropriate testing and retesting and an increase in evidence-based testing and interpretation. This should all lead to fewer admissions and improved patient diagnosis closer to home. The Network has a key role in the facilitation of end to end services.

The Network has a formal constitution including clear terms of reference and accountability arrangements set out in this structure.



The Board is made up of key stakeholders across the 10 PCT areas of Greater Manchester including clinical directors, laboratory managers and the Health Protection Agency.

The Board is accountable to Greater Manchester PCT and Acute Chief Executives and is jointly chaired by Mike Burrows, Chief Executive, Salford PCT and Andrew Foster, Chief Executive, Wrightington, Wigan and Leigh Hospitals NHS Trust. This is unique nationally and facilitates true organisational engagement for the patient journey. The local Process for Investment and Reform affords the Network an influential role, providing professional advice to commissioners of services.

The core management team for the clinically led Network is made up of the two Chief Executives, two Clinical Leads who share 5 sessions, Mr Jeff Seneviratne and Professor Keith Hyde and the Network Director, Neil Jenkinson and Support Officer, Rachel Pearson.

There are 6 Network Advisory Groups (NAGs) for the main disciplines, Clinical Biochemistry, Haematology, Microbiology, Immunology, Histopathology and Cytology.



The theme of many of the work streams is the facilitation service improvement and redesign across the conurbation and key work includes:

- Harmonisation of reference ranges, standardisation of units, standardisation of profiles, costing and pricing of tests.
- Investigation and interpretative guidelines, demand management and implementation of NICE guidelines around new tests, development of policies to implement Human Tissue Act.
- TB service specification, standards & contact tracing, guidelines for effective screening and management of MRSA and C Difficile, and non-specific Virology testing undertaken in the community.
- Directory of services, audit of referred tests, harmonisation and rationalisation of laboratory services. Development of lab to lab IT links to support test referral.
- Standardisation of good practice and protocols, reconfiguration of services to support the delivery of cancer targets and a wide ranging service review of capacity in Cytology to meet QA standards.
- Coordination of Advanced Biomedical Scientists training and training for Community/PCT led anti-coagulation clinic testing.
- Audit Activities.
- Share knowledge & good practice between laboratories.

Work streams have been developed in line with the key drivers from the Carter Review namely, point of care testing, procurement, workforce, IM&T, transport and communications.

Point of Care Testing: raise profile, agree quality standards, standardisation, governance, connectivity, build relationships with commissioners.

Procurement: effective purchasing, supply chain review, tendering & procurement

Workforce: planning/development, training & education, local workforce issues, agenda for change

IM&T: GP order Communications, Laboratory to Laboratory links, IM&T developments, shared infrastructure.

Transport: logistics, collection services, transportation services

Communications: raising profile, marketing to commissioners/providers, communications strategy, website development

Key achievements:

⇒ Supporting service developments

Haemoglobinopathy: molecular diagnostics service to be provided locally – worked with NW specialist collaborative commissioning team to secure funding

HER2: A model of treatment across GM – samples from women with breast cancer tested to see if Herceptin a suitable treatment.

Haematological: Malignancy Diagnostics (HMD) – improving cancer pathway – working with the Greater Manchester and Cheshire Cancer Network.

Molecular diagnostics

Immunology: future model across NW – working with NW specialist collaborative commissioning team

Clostridium Difficile: development of a regional typing service supported by capital investment secured by the Network.

⇒ Standardisation – to improve patient management

Units of measurement

Profiles of tests

Reference ranges

⇒ IT Connectivity – the Network secured £1m capital investment for the following projects:

GP Order Communications: this will enable GPs to request tests electronically – this is a high proportion of many laboratories' workload and will reduce repeat requesting and help guide appropriate investigations

Lab to Lab links: this will enable labs to refer work electronically, enabling better patient management and avoidance of repeat testing through improved turnaround times as well as avoiding duplicate data entry which removes the potential for errors. This is pioneering work as the first project using open standards in the UK.

IT System: to support the Haematological Malignancy Diagnostics (HMD) service

⇒ Network Tariff

⇒ Testing guidelines

Chronic Kidney Disease: implementation was developed in consultation with the Greater Manchester and East Cheshire Renal Network which led to a more standardised approach to follow up investigations

MRSA: informed by audit against DH guidelines

Urinalysis: improved demand management by guidance on appropriate use

⇒ Participation in Phase 2 of Modernising Pathology Through Action Learning. 4 sets in Greater Manchester:

Point of Care Testing

Phlebotomy Services

Lean/6 Sigma

Mortuary Services

Lion of Vienna Suite, Reebok Stadium Bolton - Friday 7th November 2008

Pathology: Making a Difference

- 8.45am Registration and Refreshments
- 9.15am Chair's Welcome – Darzi and Clinical Leadership
Dr Steve Ryan, Clinical Pathway Groups Lead, NHS North West/Medical Director Alder Hey Children's NHS Foundation Trust
- 9.40am What do Patients require from Pathology Services?
Right test, right time, right outcome
Dr Richard Fitton, Full-time General Practitioner
- 10.05am How can Pathology inform Commissioning?
Gilbert Wieringa, Consultant Clinical Biochemist
- 10.30am Break –refreshments – visit stalls/poster displays
- 10.50am The Headlines: Pathology – Making a Difference....
- To Staying Healthy – Jeff Seneviratne
- To Patient Safety and Quality – Kate Pendry/Sam Ekin
- On Infection Prevention – Emma Watson
- On Cancer – Richard Byers
- 12noon Keynote address
Getting the service right – Creating an end-to-end service by adding value to the user
Dr Danielle Freedman, Medical Director and Consultant Chemical Pathologist & Associate Physician in Clinical Endocrinology, Luton and Dunstable Hospital NHS Foundation Trust
- 12.30pm Questions for the panel – all speakers
- 1pm Networking Lunch – visit stalls/poster displays



with thanks to our sponsors

