

the Greater Manchester  
**Pathology**  
Network

A microscopic view of several red blood cells, appearing as biconcave discs, set against a dark red background. The cells are in various stages of focus, with some sharp and others blurred.

**Pathology:**  
the science  
that saves  
lives

# INTRODUCTION from Mike Burrows

Chief Executive, Salford PCT

Lead Chief Executive for Greater Manchester Pathology Network



Welcome to the first edition of the Pathology Network newsletter, for everyone working under the umbrella of pathology services in Greater Manchester.

This newsletter aims to inform you about how the Pathology Network will develop over the coming months.

Regionally, there are already well-established clinical networks supporting the development of cancer services, coronary heart disease services and renal and children's services. And over the last two years, the Greater Manchester Sexual Health Network - the first of its kind in the UK - has gained a national reputation as a model of good practice.

We hope that the lessons learned in establishing successful networks nationally can be shared with pathology services, by utilising expertise and resources.

A Pathology Network is a powerful way of organising services and creating change - it will enable barriers to be broken down between primary, secondary and tertiary care, while focusing solutions on patient care pathways, rather than organisations.

We look forward to working with our key stakeholders in pathology services in Greater Manchester on this exciting development.



## The National Picture

***Modernising Pathology: Building a Service Responsive to Patients*** is an independent review, launched in September last year, on the modernisation of pathology services.

*Modernising Pathology: Building a Service Responsive to Patients* details the work that has been undertaken since the launch of *Modernising Pathology Services* in February 2004, and outlines new challenges for 2006 and beyond.

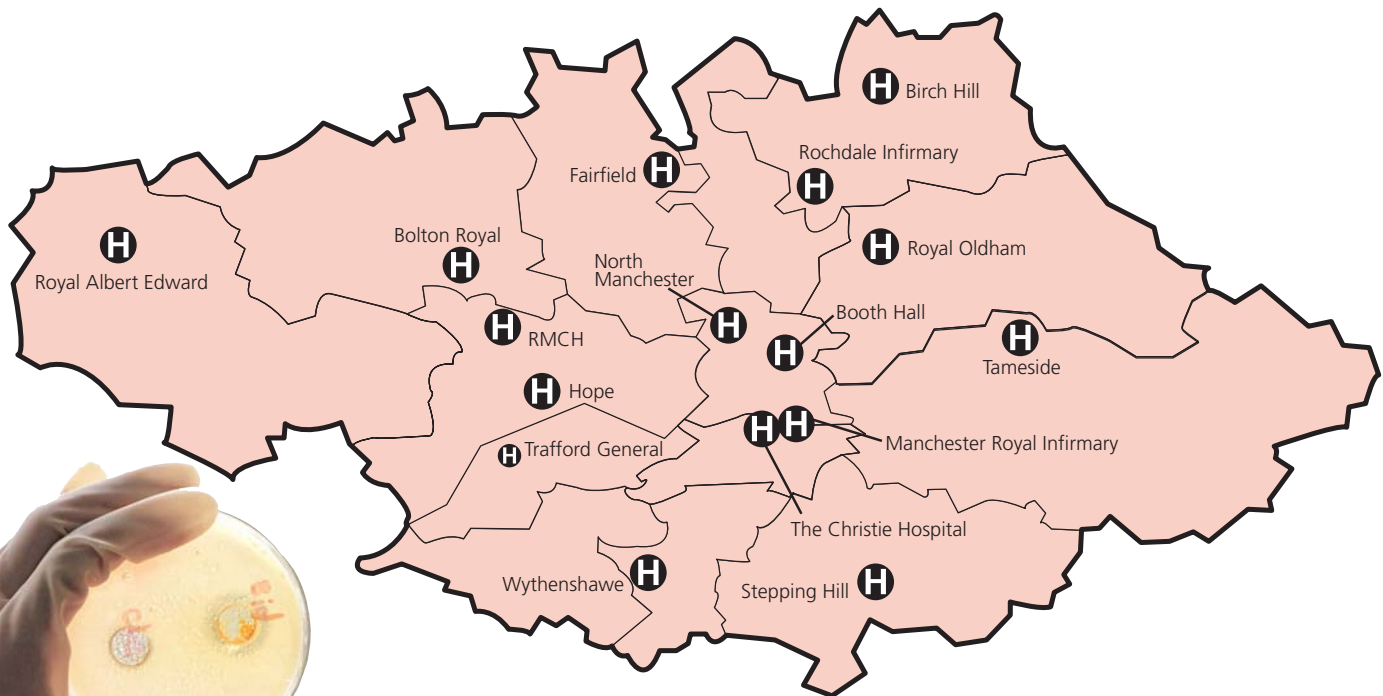
The review panel's remit is to advise, in the context of current resource constraints, on the timeliness, reliability,

capacity and efficiency of current pathology services in England. This work will be benchmarked against international standards and look at the feasibility of, and benefits arising from, wide-scale service reconfiguration, innovation and modernisation and the involvement of the independent sector.

The wide-ranging review will investigate the use of

technology, how to bring services closer to patients and the involvement of the independent sector, with the aim of improving patient access, convenience and choice.

Chaired by Lord Carter of Coles, the review panel is expected to make its recommendations in spring 2006.



# Why do we need a Pathology Network in Greater Manchester?

Pathology is an essential service - a key clinical service, with between 60 and 70 per cent of NHS diagnoses relying on pathology. Supporting community healthcare and public health as well as GP and hospital care, pathology is a crucial element in delivering a modernised health service throughout primary and secondary care.

A Pathology Network will take a 'holistic' view of services across Greater Manchester, providing high-level clinical and managerial leadership on key service planning issues and strategic decisions. The Network will work across traditional boundaries, establishing new partnerships and engaging with other key NHS initiatives to enable future services to be:

- patient-centred
- equitable
- effective
- efficient
- staff valuing
- integrated
- appropriate.



## What will the Network do?

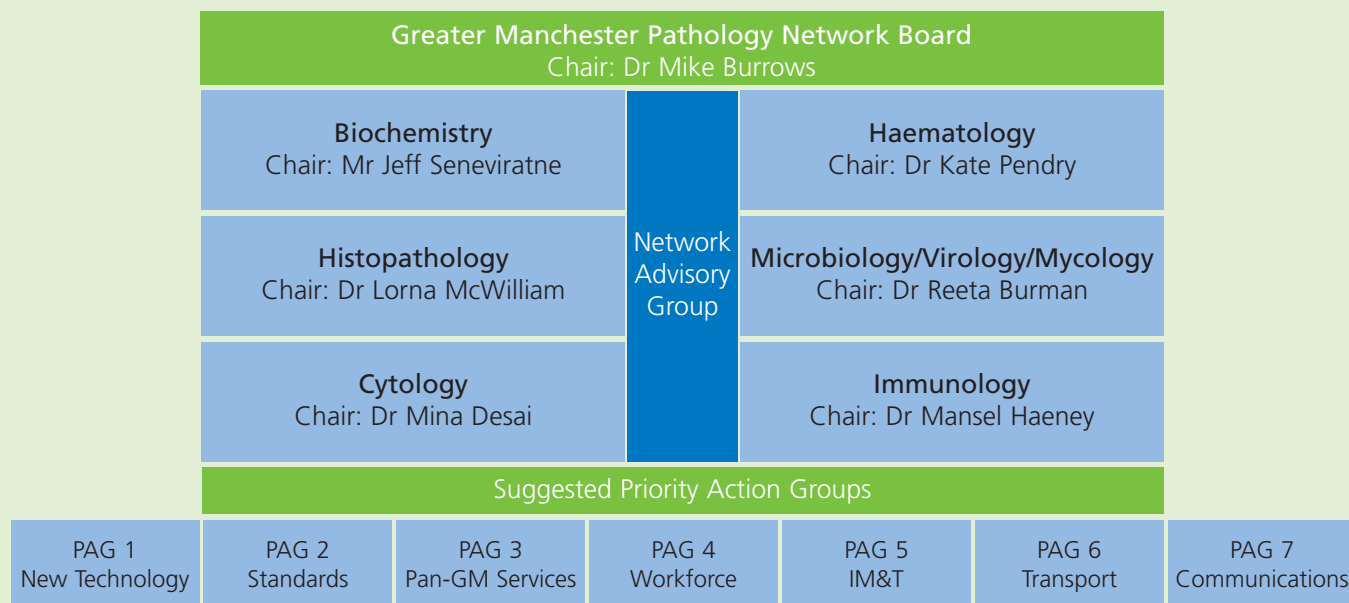
- offer a collective profile and strength, ensuring that a national strategy can be delivered locally
- guarantee standards, clinical governance and quality, and allow the sharing of best practice, so delivering consistency
- provide an effective vehicle for communicating across Greater Manchester, at all levels and across all sectors, disciplines and geography
- integrate workforce issues, such as training and education, and 'building-in' performance management arrangements to measure delivery
- ensure effective and constructive patient and public involvement in the development of pathology services, allowing the development of the right infrastructure to deliver those services.

The concept of 'networks' is actively promoted in the national review of pathology services, *Pathology - The Essential Service*, the Department of Health's 2002 proposals for modernising NHS pathology services.

Discussions have taken place between clinicians and managers in the Greater Manchester area, and they have illustrated broad support for the concept of a Pathology Network.

# How it works

## Greater Manchester Pathology Network - Structure



## Network Board Members

Dr David Alderson	Director of Pathology	Trafford Healthcare NHS Trust
Mr Chris Appleby	Lead Acute Chief Executive	Pennine Acute Hospitals NHS Trust
Dr Brian Benatar	Director of Pathology	Tameside & Glossop Acute Services NHS Trust
Dr Paul Bishop	Director of Pathology	South Manchester University Hospitals NHS Trust
Prof Eric Bolton	Clinical Director of Pathology	CM&MC/Health Protection Agency
Dr Reeta Burman	CAT Lead for Pathology	Pennine Acute Hospitals NHS Trust
Dr Mike Burrows	Lead PCT Chief Executive (Chair)	Salford Primary Care Trust
Dr Mina Desai	Clinical Head – Cytology	CM&MC University Hospitals NHS Trust
Mr Richard Freeman	Deputy Director of Commissioning	Salford Primary Care Trust
Mr Peter Gray	Pathology Manager	Bolton Hospitals NHS Trust
Dr Mansel Haeney	Clinical Director of Pathology	Salford Royal Hospitals NHS Trust
Dr Keith Hyde	Deputy Director of Pathology	CM&MC University Hospitals NHS Trust
Mr Neil Jenkinson	Network Director	Greater Manchester Primary Care Trusts
Dr Jeff Jones	Pathology Manager	Trafford Healthcare NHS Trust
Mr Martin Jones	Network Administrator	Greater Manchester Primary Care Trusts
Dr Anna Kelsey	Clinical Director – RMCH	CM&MC University Hospitals NHS Trust
Dr Lorna McWilliam	Consultant Histopathologist	CM&MC University Hospitals NHS Trust
Dr Mark Pearson	Director of Pathology	Bolton Hospitals NHS Trust
Dr Kate Pendry	Clinical Director of Pathology	Wrightington, Wigan & Leigh NHS Trust
Dr Norman Reeve	Clinical Director of Pathology	Stockport NHS Foundation Trust
Mr David Rowlands	Pathology Manager	South Manchester University Hospitals NHS Trust
Mr Jeff Seneviratne	Consultant Biochemist	Stockport NHS Foundation Trust
Dr Jonathan Shanks	Director of Pathology	Christie Hospital NHS Trust
Mr Gilbert Wieringa	Associate Director Lab Medicine	Greater Manchester Primary Care Trusts

For further information on any aspect of the Network, please contact Neil Jenkinson, Network Director via email [neil.jenkinson@manchester.nhs.uk](mailto:neil.jenkinson@manchester.nhs.uk)