

# the Greater Manchester Pathology (Laboratory Medicine) Network

## GM PATHOLOGY E-BULLETIN

### INTRODUCTION

Welcome to the GM Pathology e-bulletin. This provides regular, up-to-date information about what's going on across the Network.



### GET INVOLVED

Since the first edition of the GM Pathology e-bulletin I am sad to say I have received no voluntary input from anyone. I would welcome any comments from staff and would love to gain information about important events so don't be shy please send the details to [laura.kidd@manchester.nhs.uk](mailto:laura.kidd@manchester.nhs.uk).

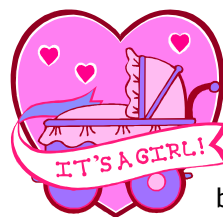
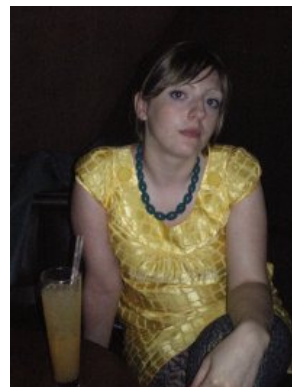
### CONGRATULATIONS

We at the Network would like to **CONGRATULATE** Daniel Smith, member of our Histo/Cyto NAG group on the birth of his little girl Ava Lily who arrived on the 4<sup>th</sup> March 2010 weighing 7lb 5oz. We all wish her and her family all the best.



**CONGRATULATIONS** also to Dr David Bisset (Histo/Cyto NAG CHAIR) who celebrated his birthday on 4<sup>th</sup> March and who will from now on share birthdays with the lovely Ava.

More recently we would like to take this opportunity to **CONGRATULATE** Rachel Pearson, GM Pathology Network Business Manager who celebrates the big 30 on Friday 18<sup>th</sup> June. We hope Rachel has a lovely weekend basking in the sunshine and enjoying herself with friends and family.



Finally the Network team would also like to **CONGRATULATE** Mr Jeff Seneviratne, Joint Clinical Lead for the GM Pathology Network on becoming a Grandfather for the first time. Jeff's daughter gave birth to a beautiful little girl on the 22<sup>nd</sup> March 2010 named Emily. We wish them all lots of fun and not too many sleepless nights!

### NETWORK ADVISORY GROUP UPDATE (NAGs)

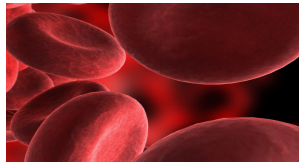
#### Biochemistry

The group continue to work on the 20:20 Emerging Vision and redesign of pathology services across Greater Manchester focussing on their specific discipline. The groups are looking at possible models of service delivery across Greater Manchester but also discussed at the meeting Familial Hypercholesterolaemia as a paper is due to go to commissioners, which is to be signed off by lipidologists in GM. The group discussed how members are progressing with the adoption of Harmonisation by 1<sup>st</sup> June 2010. The recommendation of the NAG is that the makeup of U&E, Bone and Liver profiles for Primary Care should be as follows:  
U&E - Sodium, Potassium, Creatinine, eGFR  
Bone - Calcium, Adjusted Calcium, Albumin, Alk Phos, Total Protein  
Liver - Bilirubin, ALT, ALP, Albumin, Total Protein. It was recognised that labs would need to create a new set in their LIMS for

these revised profiles. The group agreed that the FOB test whilst useful in some populations, there is concern that GPs are slowing down the cancer referral pathway by waiting for results of a test that is not appropriate for symptomatic patients. It was agreed that draft guidelines for the use of FOB should be produced.

### Haematology

Similarly to the other NAG disciplines this group continues to work on the 20:20 Emerging Vision for



Greater Manchester pathology services. The group discussed the UK Transfusion Laboratory Collaborative recommendations on minimum standards for staffing in BT as many labs currently are not compliant. The group agreed that transfusion should be discussed in further detail. The group also discussed at the meeting Modernising Scientific Careers - NW Oversight Board, PAG 7 Communications as this group is looking to widen its membership, L2L commitment as concern has been expressed by the L2L Project Board about a lack of interest from labs in this project, and a recent article in the IBMS gazette regarding pathology costing models.

### Histopathology & Cytology

This NAG group also continue to work on their discipline specific plans for GM pathology. The group also discussed the changes to HER2 Funding and its implications. The group felt that under the proposed reconfiguration, this service would need to be reviewed and agreement reached regarding where the testing would be carried out.

### Microbiology & Virology

As with the other NAG groups Microbiology and Virology are currently working on their discipline specific plan for the redesign of pathology services across Greater Manchester. Other business discussed included the New Health Protection (Notification) Regulations 2010 and members were asked to email comments directly to Erika Duffell at the HPU. The group discussed Lab2Lab and the imminent start of a TB route between MMMP and SHH and MMMP and Trafford. It was also confirmed that Immunology testing has begun between MRI and Pennine. The final proposal for the commissioning of TB services in GM has now been finalised. The document will be circulated to the group for information.

## **PRIORITY ACTION GROUP UPDATE (PAGs)**

### PAG1 – HER2

This group had been disbanded but in light of the recent changes regarding HER 2 Testing funding the group met on 19<sup>th</sup> April 2010 to discuss the situation. For more information regarding the changes please follow the link:- <http://www.gmpath.net/laboratory-professional/past-events-and-information/her-2-testing-funding/HER2-%20Letter%20re%20Tariff%2031-3-10.pdf>

After lengthy discussion the group agreed that this could now be taken to the Histo/Cyto NAG and this group need not meet again.



### PAG2 – POCT

The Network Standards for POCT guidelines have been ratified by the GM Pathology Network Board. The group were informed that a representative from Siemens has offered to attend a meeting to discuss a resolution to the DCA2000 situation. There was an update regarding the new additional CPA standards for POCT. The group discussed at the length the recent Hypoglycaemia Audit for Diabetes In Patients at UHSM. It was agreed that this audit has highlighted several issues and the group felt the audit had only been possible due to the connectivity of its glucose meters and that this should be circulated to the BIO NAG for further discussion.

### PAG4 – Workforce

The workforce team are not due to meet next until the 21st July. In the meantime the please feel free to check the latest edition of MSC The England Action Plan April 2010 by clicking on the link: <http://www.gmpath.net/laboratory-professional/modernising-scientific-careers-updates/Modernising%20Scientific%20Careers%20-%20The%20England%20Action%20Plan%20April%202010.pdf>.

## PAG5 – IM&T

Progress is still slow and the group discussed blocks being experienced and ways to stimulate the development of L2L. The issues with free text and coded comments in Telepath have been resolved and will undergo testing this week. Once successful an upgrade will be arranged for all sites. Clinisys testing between Pennine and MRI commenced last week. Technidata negotiations are still ongoing. GP Order Comms is experiencing various issues including connectivity to the VEZ system, issues with Microtest but it seems Trafford and UHSM have resolved their Anglia issues by installing Openet. The GM LIMS strategic outline case has been approved by the GM Pathology Network Board and both the PCT and Acute CEOs. Work will now commence on the second phase of this project, to develop a full business case.



## PAG7 - Communications

The website design has now been approved and the site is up and running, please use the link to access the site [www.gmpath.net](http://www.gmpath.net)

Material is regularly uploaded including all agendas, minutes of meetings and any ratified documents. The website will include a local assay finder, initially for Biochemistry where the data has already been collected. This project is still ongoing but progressing well. The PAG will also be looking at the best ways of communicating information on Network projects e.g. Lab 2 Lab and looking to increase its membership. Any one interested in joining PAG 7 should email the Network Co-ordinator at [laura.kidd@manchester.nhs.uk](mailto:laura.kidd@manchester.nhs.uk)

## **STRATEGY UPDATE**

The 20:20 Emerging Vision Strategic Outline Case was presented to and supported by the GMPN Board and both sets of CEOs at their respective meetings on the 14<sup>th</sup> and 16<sup>th</sup> April 2010. The go ahead was given for the second phase of work to begin around economic and capacity modelling and governance arrangements. The Joint Chair of the GMPN Board has confirmed that once the proposed model for GM has been finalised it will be independently financially assessed. Many key enablers have been highlighted to make the service redesign possible including IM&T and to this end both the GMPN Board and the CEOs supported the next phase of the GM LIMS project which entails the production of a

full business case to procure a single LIMS system for Greater Manchester. The group discussed the recently published letter from Dr Ian Barnes, National Lead for Pathology citing a consolidated service model as the preferred approach, which is in line with the Greater Manchester Emerging Vision. SHAs are required to deliver plans to the DH by June 2010 for further information please follow the link <http://www.gmpath.net/laboratory-professional/qipp-2013-clinical-support-rationalisation/Dr%20Ian%20Barnes%20letter%20to%20SHA%20QIPP%20Pathology%20Leads%20-%203%20June%20....pdf>

The Network Team appreciates this is an unsettling time but the 20:20 Emerging Vision is a plan to preserve NHS pathology services in Greater Manchester. Let's work together and take this opportunity to steer our destiny. As always any comments regarding the 20:20 Vision are welcomed to [laura.kidd@manchester.nhs.uk](mailto:laura.kidd@manchester.nhs.uk).

## **IMPORTANT UPCOMING MEETING DATES**

The next round of the NAG meetings will begin in July 2010, please make a note of the dates:-

Histo/Cyto 1<sup>st</sup> July  
Biochemistry 6<sup>th</sup> July  
Haematology 13<sup>th</sup> July  
Microbiology 29<sup>th</sup> July

Other Important Meeting Dates:-

L2L and PAG 5 IM&T 28<sup>th</sup> June  
Pathology Managers 29<sup>th</sup> June  
PAG 2-POCT 19<sup>th</sup> July  
PAG 4 - Workforce 21<sup>st</sup> July  
PAG 7-Communications 22<sup>nd</sup> July  
GM Pathology Network Board 6<sup>th</sup> August

All meetings will be held at Holiday Inn Central Park.



If you are the nominated representative for your Trust please make every effort to attend, if you cannot due to work or leave commitments please arrange for a deputy to attend in your absence. Please inform Laura

Kidd the Network Co-ordinator who your deputy will be in order for the correct agenda and papers to be distributed in time. Meeting attendance is so important at this critical time for pathology services. Laura can be contacted either by telephone or email on 0161 219 9418 or [laura.kidd@manchester.nhs.uk](mailto:laura.kidd@manchester.nhs.uk)

## NEXT EDITION

Please send any items for the next edition of the GM Pathology Newsletter to [laura.kidd@manchester.nhs.uk](mailto:laura.kidd@manchester.nhs.uk) by 12 noon on Friday 6<sup>th</sup> August.

## CATERING

Can I remind people to inform the Network Co-ordinator in a timely fashion of your intention to attend meetings, be it yourself or a deputy or your apologies given? Catering may seem an insignificant point but at a time when we are trying to make 20% cost savings within the Network everything helps. Prior notice of attendance is an opportunity to reduce spending on larger unnecessary rooms and over spending on tea/coffee and biscuits.

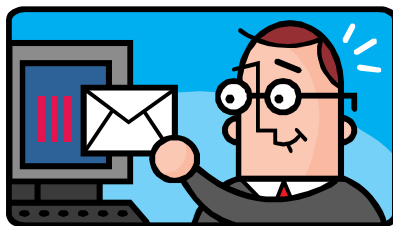


## UPCOMING EVENTS

### LAB2LAB Workshop

The GMPN will be hosting a Laboratory-2-Laboratory Workshop in the Ken Barnes Suite at the Holiday Inn Manchester Central Park, 888 Oldham Road, Manchester. M40 2BS on Wednesday, 7th July 2010 between 9:30am - 12:30pm. The agenda lists the speakers and issues to be discussed and can be viewed at [http://www.gmpath.net/laboratory-professional/lab2lab-workshop/100707%20Lab2Lab%20Workshop%20Agenda.pdf/index\\_html](http://www.gmpath.net/laboratory-professional/lab2lab-workshop/100707%20Lab2Lab%20Workshop%20Agenda.pdf/index_html)

**PANIC!**



The workshop is open to Pathology IT staff, IM&T staff, and

discipline staff interested in Lab2Lab. Please circulate this information and agenda to your colleagues interested in attending and contact Laura Kidd to reserve a place at [laura.kidd@manchetser.nhs.uk](mailto:laura.kidd@manchetser.nhs.uk)